

MEDICAL DISPOSABLES

MED-901
"Veinflo" I.V. Cannula with injection port & with wings
 Slanted and flexible wings for simple & safe fixation.
 IThumb projection for proper holdings of Cannula during insertion
 Colour coded body for easy identification of size
 Useful in high risk cases where extra opening is not desirable
 With luer lock plug.
 Sterile, Non-toxic & pyrogen free.
 Sizes : 14G TO 24G



MED-901

MED-902
"Veinflo" I.V. Cannula without wings
 IThumb projection for proper holdings of Cannula during insertion
 Colour coded body for easy identification of size
 Useful in high risk cases where extra opening is not desirable
 With luer lock plug.
 Sterile, Non-toxic & pyrogen free.
 Sizes : 14G TO 24G



MED-904

MED-903
"Veindrip" I.V. Set without Air vent
 Injection moulded drip chamber
 with / without filter
 with imported cannulae
 ETO Sterile
 Specially designed Roller facilities better flow control
 Supplied with spare air cannula needle

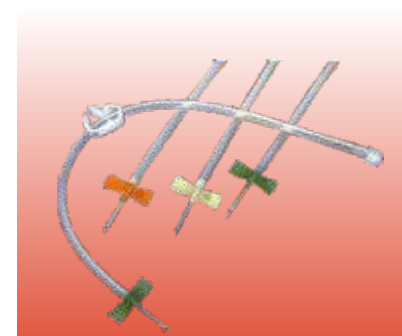
MED-904
"Veindrip" I.V. Set with Air vent
 Injection moulded drip chamber
 with / without filter
 with imported cannulae
 ETO Sterile
 Specially designed Roller facilities better flow control
 With particle filter for Air vent and Fluid Filter



MED-905

MED-905
"Veintrans" Blood Transfusion Set
 Injection moulded drip chamber with Filter
 with imported cannulae
 ETO Sterile
 Specially designed Roller facilities better flow control
 Supplied with spare air cannula needle

MED-906
"Veintrans" Blood Transfusion Set with Air vent
 Injection moulded drip chamber with / without filter
 with imported cannulae
 ETO Sterile
 Specially designed Roller facilities better flow control
 With particle filter for Air vent and Fluid Filter



MED-908

MED-907
"Veintrans" Blood Donor Set
 Two imported Cannula
 Provided with roller clamp for better flow control.
 Available with highly flexible siliconised tubing.

MED-908
"Lotusfin" A.V. Fistula Needle
 Wings are colour coded for instant identification of desired gauge.
 'Back-eye' needle to minimize interruption in blood flow.
 Lumen is also siliconised to provide maximum blood flow.
 Sizes : 15G, 16G & 17G.

MED-909
"Lotus" Urethral Catheter
 Patient comfort-nonirritating, satin-smooth plastic, passes easily.
 Transparent-easy to check for obstructions
 Catheter can be easily removed from package aseptically
 Sizes : Available in 10FG, 12 FG, 14FG & 16FG with soft PVC adapter.



MED-910

MED-910





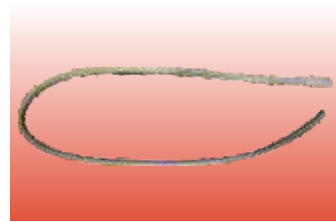
MED-910



MED-911



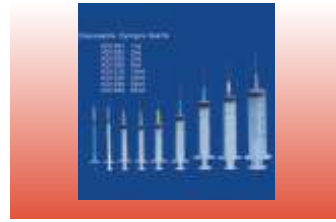
MED-912



MED-913



MED-916



MED-917



MED-918



MED-919

"Lotus" Urine Bag
Sterile - ready for use.
Manufactured from highly flexible grade PVC.
Capacity : 2000ml & 100ml pediatric
Non return valve prevent back flow of fluid or bacterial migration.

MED-911
"Lotus" Feeding Tube
Sterile - ready to use
Manufactured from Non-toxic PVC. Non-irritant to delicate mucosa
Low friction siliconised tubing and super smooth tip ensures trauma free intubation.
Distal end is coned with two lateral eyes.
Radio opaque line runs its length for X-Ray visualisation.
Sizes : 5FG, 5FG, 7FG, 8FG, 9FG & 10FG

MED-912
"Lotus" Oxygen Mask
Oxygen mask are available with soft PVC adapter and 150 cms long tubing which can be connected easily to an Oxygen source.

MED-913
"Lotus" Suction Catheter
Manufactured from non-toxic, non-irritant siliconised PVC
Provided with and without X-ray opaque line throughout its length.
Distal end is open with one/two lateral eye.
Proximal end is fitted with Universal connector for safe connection to standard suction equipment.

MED-914
"Lotus" Ryle's Tube
Sterile - ready for use
Manufactured from Non-toxic, Non-irritant PVC.
Super smooth, low friction, siliconised surface facilitates easy insertion.
X-Ray opaque line is provided through-out the length.
Distal end is coned and corrosion resistant, stainless steel balls are sealed into the tube, to assist the passage of the tube, during insertion.
Four Lateral Eyes are provided for efficient aspiration and administration treatment.
Sizes : 8FG, 10FG, 12FG, 14FG, 16FG, 18FG & 20FG

MED-915
"Lotus" Scalp Vein Set
Butterfly is connected to the soft Non-toxic, Non-irritant.
Siliconised tube which does not kink.
Each gauge needle is fitted an colour coded Butterfly for immediate detection of needle size.

MED-916
"Lotus" 3-way stopcock
Sterile, Single use and non-pyrogenic
Fully transparent polycarbonate body for visualization of flow
Arrow indication marks for indication direction of Flow.

MED-917
"Lotus" 3-way stopcock with extension tube
Sterile, Single use and non-pyrogenic
Fully transparent polycarbonate body for visualization of flow
Arrow indication marks for indication direction of Flow.
With 100mm. soft PVC extension tube with leur adapter.

MED-918
"Veinject" Disposable Syringe
Sterile, Single use and non-pyrogenic, EO Gas sterilised.
Medical grade polypropylene
Available with leur lock and leur slip needle.
Available in 2-part and 3-part syringe.
Sizes : 1ml, 2ml, 3ml, 5ml, 10ml, 20ml & 50 ml.

MED-919
"Losafe" Surgical Gloves
Made from natural rubber latex and Hypo-allergenic compounds.
No sensitization response conducted in conformance with EN46002 quality Standards.
Excellent hand-fitting.
Safe grip finish with textured surface, easy donning and comfort.
Manufactured in accordance with system of ISO 9002.
Meet or exceed ASTM 3577-95 standard.
Meet or exceed European Standard, EN455-1/2/3.

One pair per paper pack.

MED-920
"Losafe" Examination Gloves
Made from natural rubber latex and Hypo-allergenic compounds.
No sensitization response conducted in conformance with EN46002 quality Standards.
Excellent hand-fitting.
Safe grip finish with textured surface, easy donning and comfort.
Manufactured in accordance with system of ISO 9002.
Meet or exceed ASTM 3577-95 standard.
Meet or exceed European Standard, EN455-1/2/3.
100 pcs. in a dispenser box.

SURGICAL INSTRUMENTS

MED-921
"Wolfarm" Surgical Instruments
Instrument made from non-magnetic imported medical grade stainless steel
Scalpel Handles & Knives, Diagnostic Instruments, Operating & Dissecting Scissors, Dressing & Tissue Forceps, Artery Forceps, Retractors Probes & Trocars, Suction Tubes, Laryngoscopes, Needle Holders, Plaster Instruments, Amputating Saw & Hammers, Rib Spreaders, Cardiovascular, Tissue & Holding Forceps, Rectal Specula & Intestinal Clamps, Kidney Stone Forceps, Vaginal Speculum & Uterine Dilators, Midwifery & E.N.T. Instruments.

MED-922
"Wolfarm-TC" Surgical Instruments with T.C. Inserts
Instrument made from non-magnetic imported medical grade stainless steel with British Tungsten Carbide inserts for sharpest cutting edges and firmest grips.
TC-Scissors, TC-Needle Holders, TC-Foreceps & TC-Bone Rongeurs.

STAINLESS STEEL HOSPITALWARE

MED-923
Dressing Drum
Jointless drums made from stainless steel
Available in all sizes

MED-924
Urine Pot, Male
Made from high grade stainless steel with handle and cover

MED-925
Urine Pot, Female
Made from high grade stainless steel with handle and cover

MED-926
Bed Pan
Made from high grade stainless steel with handle and cover

MED-927
Stainless Steel Basins
Made from high grade stainless steel, shallow type. Also available in UNICEF 6ltr. pattern

MED-928
Douche Can
With / without rubber tube and nozzle with stopcock. 1.5 ltr. and 2ltrs.

MED-929
Gallipot
Stainless steel round rim 10cm, 11.5cm, 13cm & 14cm

MED-930
Bowl UNICEF
Stainless steel dia 17.5cm & 20 cm

MED-931
Iodine Cup
Stainless steel dia 4cm

MED-932
Kidney Tray
Stainless steel size 6cm, 8cm, 10cm & 12cm

MED-933



MED-920



MED-921



MED-924



MED-926



MED-927

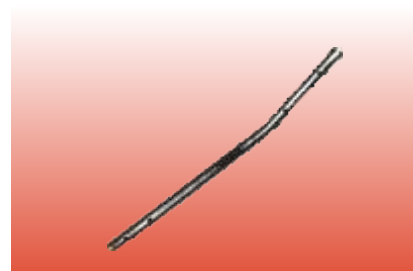




MED-932



MED-936



MED-939.1



MED-940.6



MED-941.1



MED-941.17

Dressing Jar

Stainless steel capacity : 1ltr. & 1.5 ltr.

MED-934**Spirit Lamp**

Available in both stainless steel and borosil glass

MED-935**Lotion Bowl**

Stainless steel 9.5cm, 12cm, 14cm & 16cm

MED-936**Catheter Tray with Cover**

Stainless steel size : 20 x 7.5 cms. and 42 x 10 cms.

MED-937**Instrument Tray with Cover**

Stainless steel size : 20 x 15cm, 22 x 15cm, 25 x 20cm, 27 x 17.5cm, 30 x 20cm

MED-938**Sputum Mug with lid**

Stainless steel dia : 10 cm.

ORHTOPAEDIC IMPLANTS**MED-939****Intramedullary Nails and Bolts**

- 939.1 Universal Tibial Nail
- 939.2 Universal Femoral Nail
- 939.3 Locking Bolt

MED-940**Bone Screws**

- 940.1 DHS-DCS Screws
- 940.2 Cancellous Screws
- 940.3 Cancellous Screws Full Thread
- 940.4 Cancellous Screws Front Thread
- 940.5 Cannulated Screws
- 940.6 Malleolar Screws
- 940.7 Shaft Screws

MED-941**DHS & DCP Plates**

- 941.1 DHS Plate
- 941.2 Broad DCP Plate
- 941.3 Narrow LC-DCP Plate
- 941.4 DCS Plate
- 941.5 Condylar Butress Plate
- 941.6 I-Butress Plate
- 941.7 Semi-Tabular Plate
- 941.8 MacLaughlin Plate
- 941.9 Cloverleaf Plate
- 941.10 Small T-type Oblique Angle
- 941.11 Spoon Plate
- 941.12 Steffee Plate
- 941.13 Cloverleaf Plate
- 941.14 Small Plate
- 941.15 Wain-Right Plate
- 941.16 Straight Reconstruction Plate
- 941.17 Y-Reconstruction Plate

MED-942**Hip Prosthesis**

- 942.1 Austin Moore
- 942.2 Thompson
- 942.3 Bipolar
- 942.4 Total Hip
- 942.5 Modular Hip

MED-943**Nails, Pins & Wires**

- Kuntscher Cloverleaf Nail
- Bend Kuntscher Cloverleaf Nail
- Rush Nails
- Staples Conventary
- Kirschner Wire

MED-944**Fixators**

- 944.1 Ilizarov Fixator
- 944.2 Fixator-Wrist
- 944.3 External Fixator Tabular
- 944.4 Single Pin Clamp
- 944.5 Double Pin Clamp
- 944.6 Connecting Clamp
- 944.7 Open Single Pin Clamp
- 944.8 Twin Adjustable Clamp Straight
- 944.9 Twin Adjustable Clamp Curved
- 944.10 Transverse Clamp
- 944.11 Tube to Tube Clamp
- 944.12 Open Connecting Clamp
- 944.13 Compression Distraction Device
- 944.14 Shanz Pin Introducer
- 944.15 Spanner
- 944.16 T-Wrench
- 944.17 Box Spanner - 11 mm
- 944.18 Triple Trocar Set with Handle
- 944.19 Sleeve for Shanz Screw
- 944.20 Tubular Rod
- 944.21 Cancellous Front Threaded Spanner-8mm
- 944.22 Small Single Pin Clamp
- 944.23 Small Connecting Clamp
- 944.24 Double Sleeve

MED-945**Spinal Implants**

- 945.1 Harrington Hook Blunt
- 945.2 Harrington Hook Sharp
- 945.3 Harrington Rod
- 945.4 Hart Shells

MED-946**Orthopaedic Instruments**

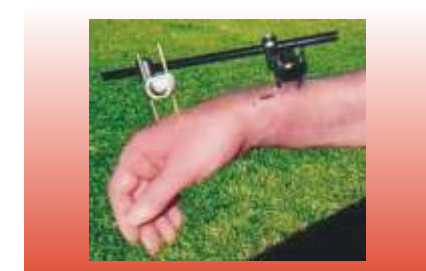
- 946.1 Awls
- 946.2 Benders
- 946.3 Bolts
- 946.4 Clamps
- 946.5 Chisels S.P. Type
- 946.6 Drills
- 946.7 Drill Bits
- 946.8 Drill Guides / Drill Guides XL
- 946.9 Drill Sleeves
- 946.10 Drill Tap Sleeve / Drill Sleeves XL
- 946.11 Drill Taps / Drill Taps XL
- 946.12 Elevators
- 946.13 Extractors
- 946.14 Forceps
- 946.15 Forceps - Bone Cutting
- 946.16 Gauge / Depth Gauge XL
- 946.17 Gauge for ACC Cup XL



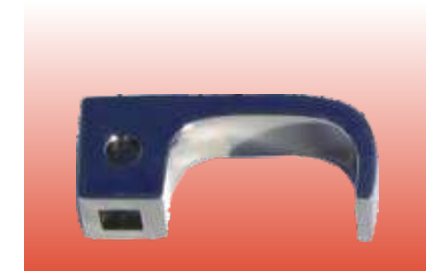
MED-942.1, 942.2



MED-942.3



MED-944.3



MED-945.1



MED-945.2



MED-946.15

The above list is only indicative, complete range of orthopaedic implants and instruments are available.